

March 10, 2009



International Environmental Cooperation of Kitakyushu City

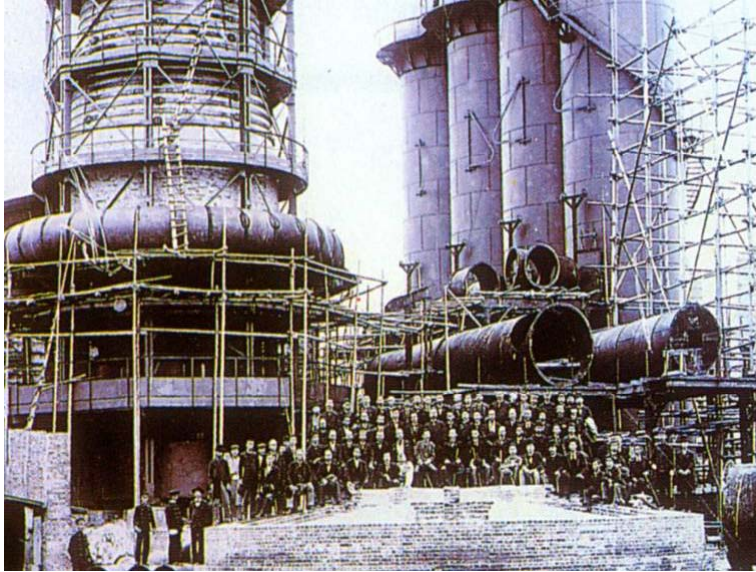


TANAKA Mayuri
Environment Bureau City of Kitakyushu

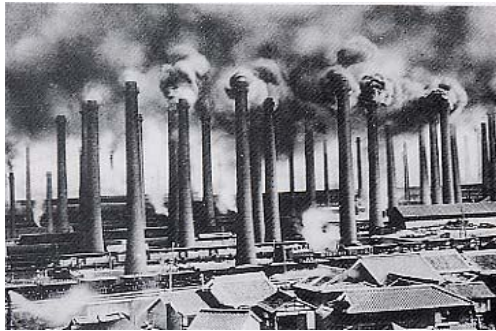
Kitakyushu and Asia



Inception of Industrialization



Yawata Steel Works in 1901



*Tobata District
in the 1950s*



Dust Fall: 80t/km² / month



Kitakyushu's Experience in Getting Pollution under Control – A Miracle in the 20th Century



1960s



Today

Major Factors in Getting Pollution under Control in Kitakyushu

Governmental Intervention

Multi-stakeholder Involvement

Corporate Social Responsibility



The Solid Foundation for a Sustainable Society



Kitakyushu Eco-Town Center



- Environmental Education
- Visitors' Center
- Exhibition of Technologies
- Supporting Practical Researches in Kitakyushu Eco-Town

