

Second Meeting of the Kitakyushu Initiative Network (Mayors' Segment)
17 October 2003
Weihai, People's Republic of China

Ms. Sri Tantri Arundhati
Ministry of Environment (Republic of Indonesia)

BANGUN PRAJA PROGRAM

Bangun Praja Program is one of the programs planned by Ministry of Environment to assist the local government in building the capacity of its environmental management **towards Good Environmental Governance**. By achieving good environmental governance, the local government has empowered all the stakeholders and enhanced its capability in implementing a balanced utilization of natural resources as well as sustainable development. The main focus of the Bangun Praja Program is to **strengthening the coordination system**.

PURPOSE

To enhance the local government capacity in implementing good environmental governance, hence increasing government performance.

GOALS

- Good Governance
- Good Environment

CRITICAL SUCCESS FACTORS

- Motivation of the local government Head
- Competency and commitment of leaders
- Effectivity of institutions
- Human resources capacity and capability
- Supporting policies
- Accountability
- Availability of funding

STRATEGY

- Stimulation of the local government through incentives, in the form of direct awards as well as awards via other agencies such as the General Allocation Fund (Dana Alokasi Umum), Specific Allocation Fund (Dana Alokasi Khusus), Specific region fund allocations for environmental control (such as Inpres Pedal) and Technical Assistance.
- Clear accountability, i.e the success targets are determined and can be measured
- Competition between regions/cities in clusters. The clusters are determined based on the ecosystem, natural resources, economic and regional development relationships.
- Local specific approach, due to the uniqueness of each regions

SCOPE OF PROGRAM

A. Timeframe

The implementation of the first phase is from 2002 to 2004

B. Location

The program will be implemented nationwide based on a regional approach in order that a balance and equality of Bangun Praja Program implementation can be achieved throughout Indonesia

C. Partnership

The local governments (Provinces, Cities and Regencies) are the partners of the Ministry of Environment in implementing the program.

D. Activities

1. **Monitoring and Evaluation**

The main point of Bangun Praja Program implementation **is monitoring and evaluation** of the Cities / Regencies management and the physical environment based on specified criteria and indicators. Those are the reflection of regional environmental management performance, and how far the regions have implemented their good environmental governance. During the initial phase, the monitoring and evaluation are focused on the solid waste disposal, greening open spaces, public facilities and water quality management performance. But then it will be developed by plan so it will aimed towards total environmental management performance for specified times as well as policies recommendation on environmental management. The cities and regencies participants that show significant increase performance will be awarded the **BANGUN PRAJA AWARD**.

2. **Mapping**

Mapping environmental conditions and problems will be carried out for the regions that have not yet participated in Bangun Praja Program. The objectives is to identify strategic environmental issues and institutional capacity and also to determine policy and specific programs regarding environmental control and management. By knowing the specific environmental issues of its regions, the programs and assistance needs of each regions can be determined, such as specific guidelines for environmental management. Through this mapping, the cities and regencies are expected to be keen to participate in the Bangun Praja Program.

THE PROGRAM IMPLEMENTATION

A. Phase of the implementation

1. *First Year (2002)*

The first year of the implementation program is a preparation phase. The activities include :

- a. Developing the Framework of Bangun Praja Program 2002-2004 and the Guidelines of Monitoring and Evaluation of the Bangun Praja Implementation 2002. The guidelines focus on the monitoring and evaluation of solid waste disposal, greening open spaces, public facilities, and water quality management aspects.
- b. Formulating a system for the monitoring and evaluation and also mapping the condition and environmental problems of Cities and Regencies. The system includes :
 - Criteria and performance indicators
 - The party responsible for monitoring and evaluation
 - Rules for monitoring and evaluation
 - Time schedule implementation of monitoring and evaluation
- c. Determining the monitoring and evaluation regions (programs regions participants). The program's regional participants are determined based on the following criteria :
 - i. Metropolitan areas and big Cities
 - ii. Capital City of Provinces
 - iii. Voluntary or commitmentThose criterias are based on the assumption that the cities have already potential solid waste problems and/or have the capability to handle this problem.
- d. Baseline study of the regional participants. A baseline study is the evaluation which is done in the first year to get an initial performance profile of the cities and regencies
- e. Delivery the baseline study result to the cities and regencies of Bangun Praja participants.

- f. Implementation of four monthly evaluations to identify the stage of environment management performance at the present.
 - g. Mapping environmental conditions and problems of the cities and regencies besides in (c) to get a description of the strategic environmental issues and the capacity of regional environmental management in assisting regions in formulating policy and programs which correspond to their needs.
2. *Second Year (2003)*
 The Bangun Praja Program participants will be evaluated and awarded. The continuing evaluation results will describe performance changes within a year by using the same criteria and indicators. The cities and regencies that have significant indication of improvement from the initial performance (base line study result) will get national acknowledgement such as the **BANGUN PRAJA Award**.
3. *Third Year (2004)*
 The regions will be evaluated in their predetermined clusters. The objective of clustering is to create competition and close relationships among the regions in a cluster. In 2004 the evaluation is expanded into coastal management, environmental Impact Assesment, Spatial Zoning besides the solid waste disposal, greening open spaces, and water quality management aspects.

For further phases, the evaluation scope of the Bangun Praja will be expanded into other aspects which are requirements for regions to achieve Tata Praja Lingkungan (Good Environment Governance).

B. The Mechanism and Partnership

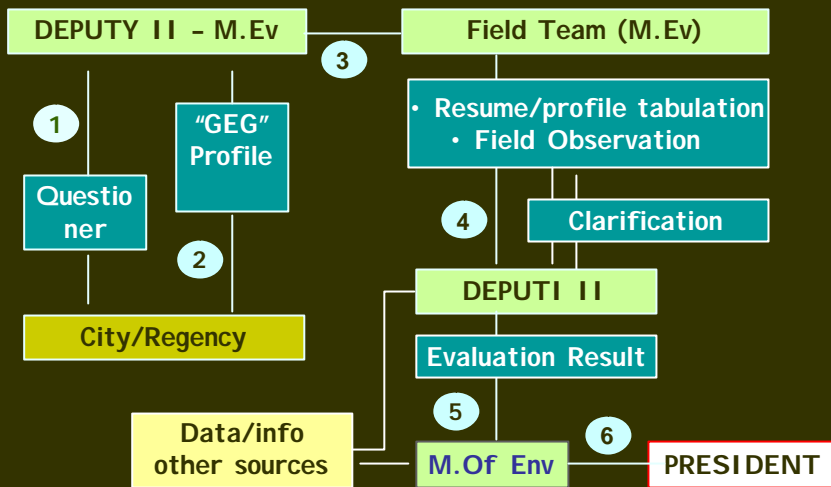
The parties involved in the implementation of the program :

1. The Ministry of the Environment cq . Deputy for Capacity Development of Regional Environmental Management (Deputi II) as the developer and care taker of the program.

During the first and second year (2002 and 2003), the Ministry of Environmental will appoint a Monitoring and Evaluation Team, composed of staff members of the Ministry of the Environment which will be assigned to conduct the baseline study as well as monitoring and evaluation. In future years, the evaluation will be done by the City Evaluation Council which will be formed. The mapping of environmental conditions and problems will be carried out by the Deputi II on a continuous basis.

2. Local Government; Cities and Regencies as the participants
3. City Evaluation Council /Dewan Evaluasi Kota (the formation, assignment and membership will be determined in the Monitoring and Evaluation Guidelines of Bangun Praja)
4. National Advisory Council/Dewan Pertimbangan Nasional (the formation, assignment and membership will be determined in the Monitoring and Evaluation Guidelines of Bangun Praja)

THE IMPLEMENTATION, YEAR 2002-2004

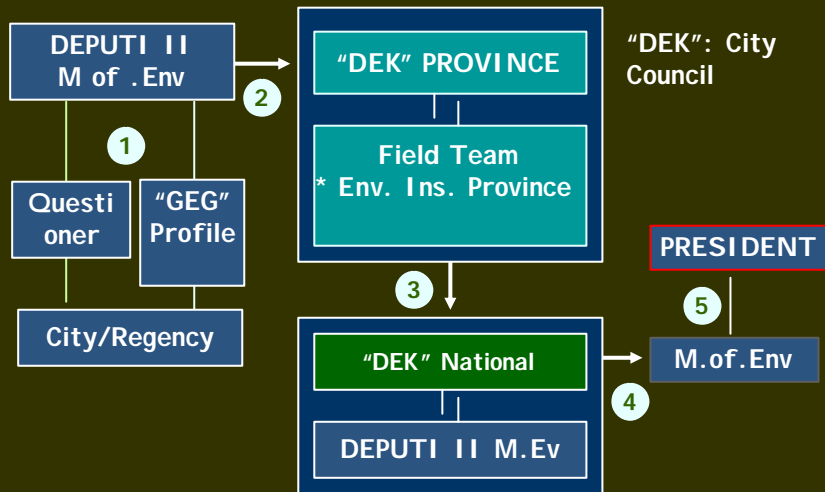


Mei 2003

BP-SISTEM EVALUASI

19

The Implementation, Year 2005 - Future



Mei 2003
Mei 2003

BP-SISTEM EVALUASI

20

List of the Cities/Regencies Participant: BANGUN PRAJA PROGRAM

Notes: kota = city, kab. (kabupaten)=regency/residence

SUMATERA			BALIDANUSRA			SUMAPAPUA			JAWA DAN KALIMANTAN		
2002			2002			2002			2002		
1	Kota	Medan	1	Kota	Denpasar	1	Kota	Makassar	1	Kota	Jakarta Pusat
2	Kota	Palembang	2	Kota	Mataram	2	Kota	Manado	2	Kota	Jakarta Selatan
3	Kota	Padang	3	Kota	Bima	3	Kota	Palu	3	Kota	Jakarta Timur
4	Kota	Bandar Lampung	4	Kota	Kupang	4	Kota	Jayapura	4	Kota	Jakarta Barat
5	Kota	Pekanbaru	5	Kab.	Gianyar	5	Kota	Kendari	5	Kota	Jakarta Utara
6	Kota	Jambi	6	Kab.	Tabanan	6	Kota	Ternate	6	Kota	Tangerang
7	Kota	Bengkulu	7	Kab.	Sikka	7	Kota	Pare Pare	7	Kota	Bogor
8	Kota	Pematang Siantar	8	Kab.	Ende	8	Kab.	Wajo/Sengkang	8	Kota	Bandung
9	Kota	Binjai	9	Kab.	Badung	2003			9	Kota	Semarang
10	Kota	Metro	2003			10	Kota	Bitung	10	Kota	Surabaya
11	Kota	Pangkal Pinang	10	Kab.	Klungkung	11	Kota	Gorontalo	11	Kota	Malang
12	Kota	Tebing Tinggi	11	Kab.	Bangli	12	Kota	Palopo	12	Kota	Surakarta
13	Kota	Bukit Tinggi	12	Kab.	Karangasem	13	Kota	Buton	13	Kota	Yogyakarta
14	Kab.	Rejang Lebong	13	Kab.	Jembrana	14	Kab.	Bone	14	Kota	Banjarmasin
15	Kab.	Bungo Tebo	14	Kab.	Buleleng	15	Kab.	Kolaka	15	Kota	Samarinda
16	Kab.	Tanah Datar	15	Kab.	Lombok Tengah	16	Kab.	Maros	16	Kota	Pontianak
17	Kab.	Bengkalis	16	Kab.	Lombok Timur	17	Kab.	Unaha	17	Kota	Balikpapan
18	Kab.	Indragiri Hulu	17	Kab.	Sumbawa Besar	18	Kab.	Donggala	18	Kota	Palangkaraya
19	Kab.	Muara Enim	18	Kab.	Timor Tengah Sel	19	Kab.	Soppeng	19	Kota	Salatiga
2003			19	Kab.	Sumba Timur	20	Kab.	Minahasa	20	Kab.	Serang
20	Kota	Sabang	20	Kab.	Alor	21	Kab.	Gowa	21	Kab.	Kebumen
21	Kota	Banda Aceh				22	Kab.	Mimika	22	Kab.	Wonogiri
22	Kab.	Tapanuli Selatan							23	Kab.	Purbalingga
23	Kab.	Solok							2003		
24	Kota	Payakumbuh				24	Kab.	Bogor	24	Kab.	Bogor
25	Kab.	Kampar/Bangkinang				25	Kab.	Sukabumi	25	Kab.	Sukabumi
26	Kota	Batam				26	Kota	Depok	26	Kota	Depok
27	Kab.	Tanjung Balai Karimun				27	Kota	Cimahi	27	Kota	Cimahi
28	Kota	Tanjung Pinang				28	Kab.	Karanganyar	28	Kab.	Karanganyar
29	Kab.	Batanghari				29	Kab.	Sragen	29	Kab.	Sragen
30	Kab.	Musi Rawas				30	Kab.	Kudus	30	Kab.	Kudus
31	Kab.	OKU				31	Kab.	Kendal	31	Kab.	Kendal
32	Kab.	Bengkulu Utara				32	Kab.	Kota Waringin Timur	32	Kab.	Kota Waringin Timur
33	Kab.	Lampung Selatan				33	Kab.	Pemalang	33	Kab.	Pemalang
34	Kab.	Tanjung Pandan				34	Kab.	Kediri	34	Kab.	Kediri
						35	Kab.	Lumajang	35	Kab.	Lumajang
						36	Kab.	Pasuruan	36	Kab.	Pasuruan
						37	Kab.	Sidoarjo	37	Kab.	Sidoarjo
						38	Kab.	Bojonegoro	38	Kab.	Bojonegoro
						39	Kab.	Tuban	39	Kab.	Tuban
						40	Kab.	Lamongan	40	Kab.	Lamongan
						41	Kab.	Gresik	41	Kab.	Gresik
						42	Kab.	Mojokerto	42	Kab.	Mojokerto
						43	Kab.	Sanggau	43	Kab.	Sanggau
						44	Kota	Singkawang	44	Kota	Singkawang
						45	Kota	Banjar	45	Kota	Banjar
						46	Kota	Banjarbaru	46	Kota	Banjarbaru
						47	Kab.	Kutai	47	Kab.	Kutai
						48	Kota	Tarakan	48	Kota	Tarakan